



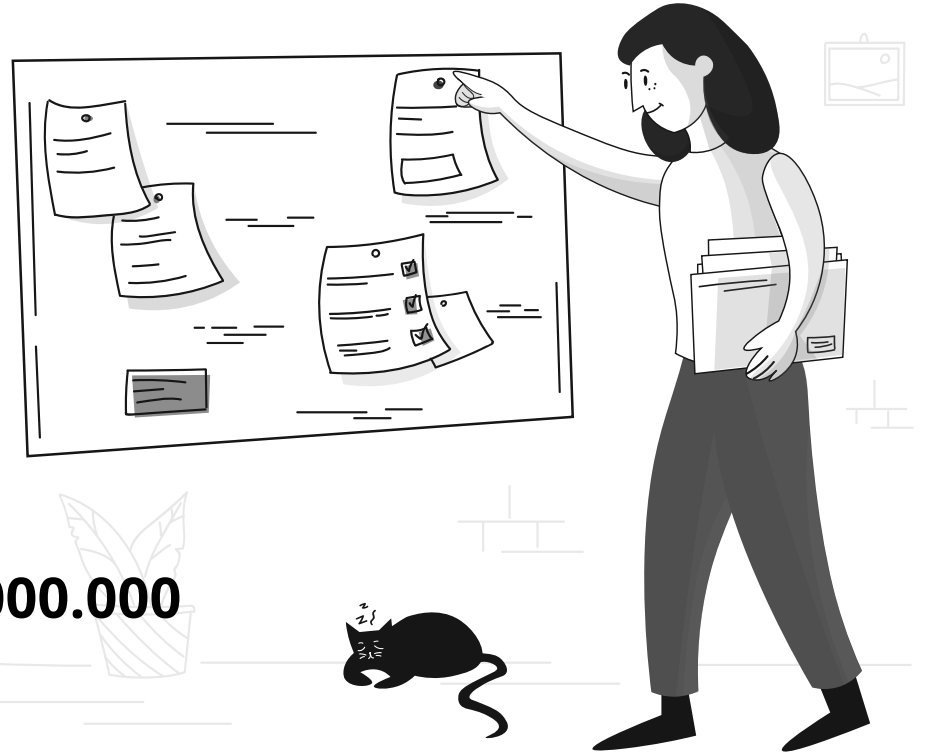
# MOMENTS

The speed of causality

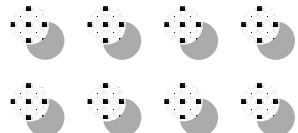
3000 realms in a single  
thought moment of life.

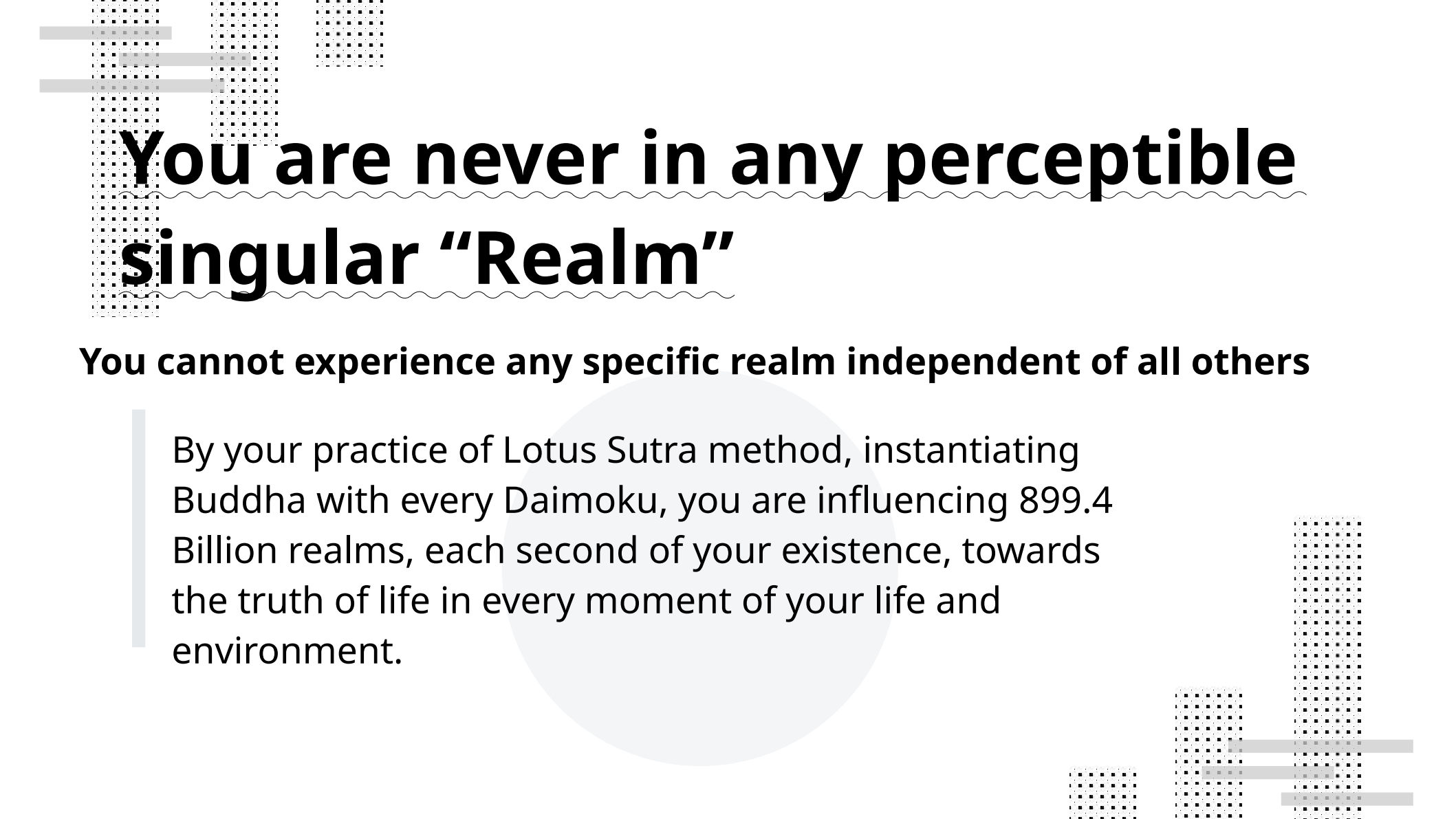
# $E=mc^2$

- **C = speed of causality (light)**
- **C = 299792458 m/s**
- **Moment = 1 second/299792458**
- **3000 realms = 1 moment**
- **Realms per Second= 899,377,374,000.000**



Illustrations by Pixeltrue on  
[icons8](#)

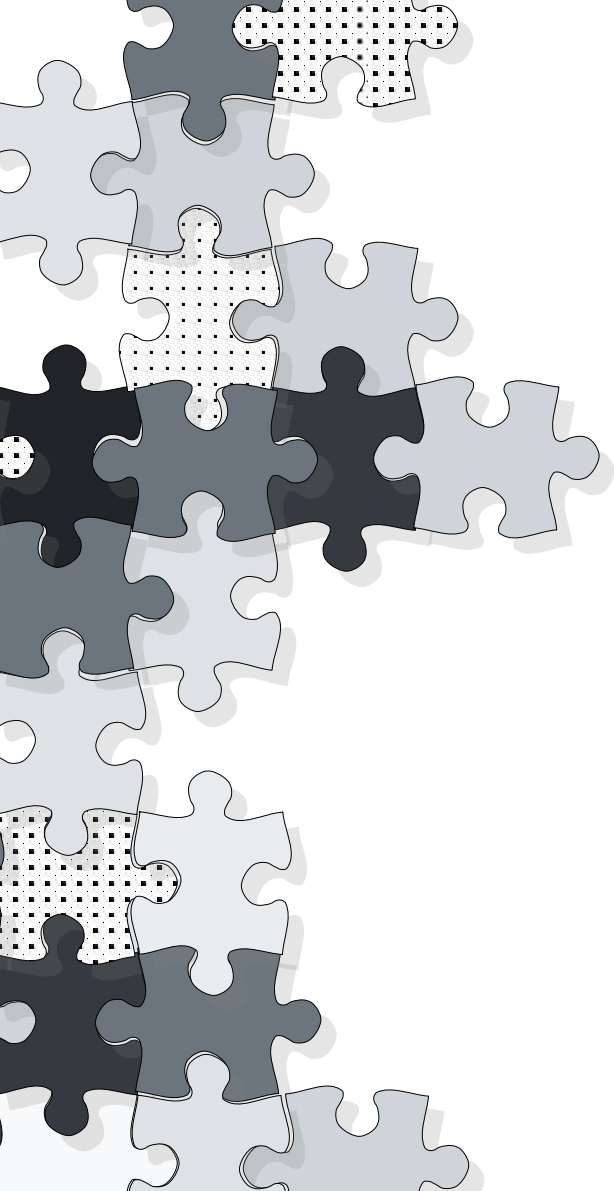




# **You are never in any perceptible singular “Realm”**

**You cannot experience any specific realm independent of all others**

By your practice of Lotus Sutra method, instantiating Buddha with every Daimoku, you are influencing 899.4 Billion realms, each second of your existence, towards the truth of life in every moment of your life and environment.

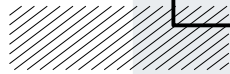


“

The moment of your perception of this truth is **RENGE (your AHA! moment)**.

**RENGE** is the **GoHonzon** objective window to **Buddhahood**.

”

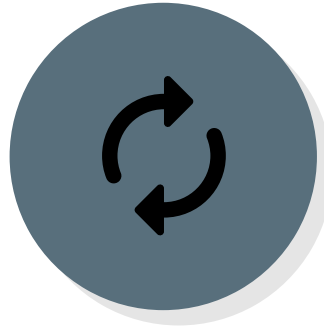


# Lotus Method



## CAUSE

Your concentrated **EFFORT**  
as manifested in your  
willful chanting to  
instantiate Buddha



## MOMENTUM

Effect of influence from  
your instantiation of  
Buddha by invoking  
NaMuMyoHoRenGeKyo



## EFFECT

Your experience of Buddha  
via GoHonzon perception of  
the engine of Life